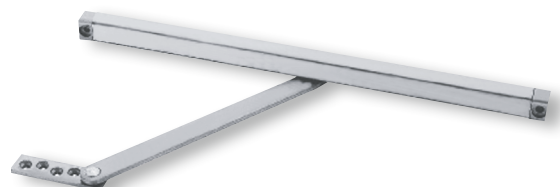


**GLYNN-JOHNSON®**

# 450 Series

Door controls



Glynn-Johnson provides the most complete line of overhead holders and stops, offering solutions for the most demanding door control problems.

Glynn-Johnson 450 Series holders and stops provide versatile surface-mounted overhead door control for all medium to light-duty applications.

The 450 Series holders and stops are designed for installation in virtually all types of doors and frames including doors with conventional butt hinges, off set pivots, continuous hinges, swing clear hinges and many other speciality hinges. The templates provided allow for variable mounting positions, ranging from 85° - 110° of opening.

## Features

- 450H Series hold open - holds door open at predetermined positions permitting unobstructed traffic flow
- Adjustable hold open tension is available
- 450S Series stop only - when the hold open function is not required, the stop-only function provides the same effective door control without keeping the door held open
- 450F Series friction hold open model provides controlled opening and closing movement. Friction tension is adjustable
- Five track lengths to suit doors opening from 457mm to 1145mm
- Suitable for single acting exterior and interior doors, easy to install
- Templating suitable for doors opening from 85° to 110°
- Refer fitting instructions for setout details
- Non-handed
- The 10 year warranty provides specifiers and users with assured quality and performance

## Specification guide

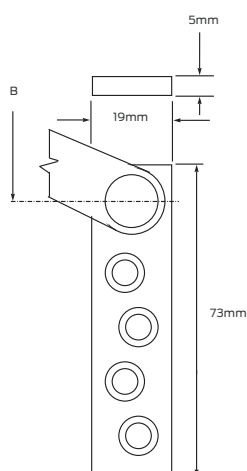
Model	Function	Finish
457mm - 584mm door opening .....*451	Friction ..... F	Satin chrome plate.....SCP
585mm - 685mm door opening ..... 452	Hold open .....H	
681mm - 830mm door opening ..... 453	Stop only .....S	
838mm - 990mm door opening..... 454		
990mm - 1145mm door opening.....*455		

- Model  
Select the desired model according to door opening ..... 451
- Function  
Select the required function ..... 451F
- Finish  
Select the required finish e.g. Satin chrome plate ..... 451FSCP

\* Available in friction only

### Standard jamb bracket

Mounting dimensions A, B & C must be determined from chart included with installation instructions.

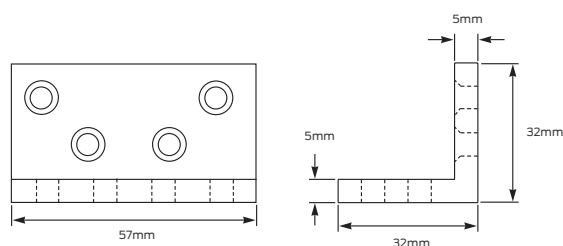


### Specifications

Door type	Timber or metal
Door thickness	35mm to 57mm
Door width	457mm - 1145mm
Fixings	Sexbolts for channel attachment to door
Material	Steel
Finish	Satin chrome plate
Warranty	10 year mechanical

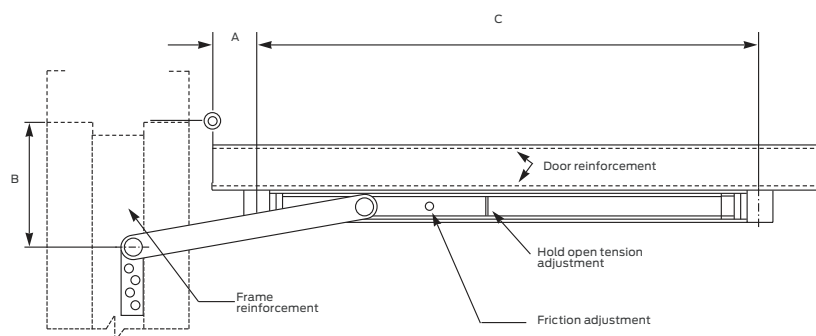
**Note:** It is recommended that metal door frames be reinforced where the jamb bracket is attached

### Angle jamb bracket

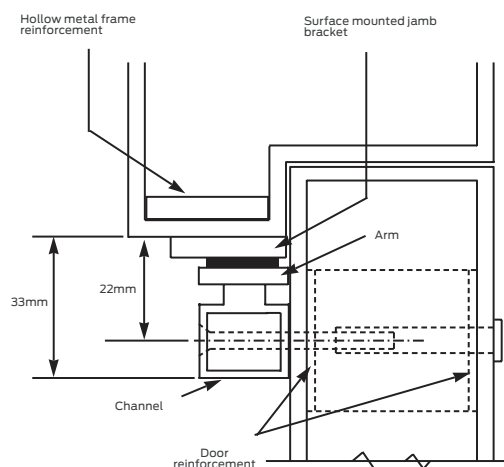


## Butt hinge mounting details

Mounting dimensions A, B & C must be determined from chart included with installation instructions



### Cross section in closed position





ALLEGION™

PIONEERING SAFETY™

We are  
Allegion

Briton ■ LCN ■ **LEGGE** ■ **SCHLAGE** ■ VON DUPRIN